

PL

Skład
100% Poliester

Waga
320g/m² ±5% (450g/mb ±5%)

Szerokość rolki
Minimum 140 cm

Odporność na ścieranie
5 lat gwarancji/ 100,000 cykli
Martindale 'a

Odporność na światło
5 (ISO 105 - B02)

Odporność na ścieranie
Wet: 4, Dry: 4 (ISO 105 - X12)

Atest trudnozapałności
BS EN 1021 - 1 (papieros)
BS EN 1021 - 2 (zapalnik)
BS 7176 Low Hazard

D

Zusammensetzung
100% Polyester

Gewicht
320g/m² ±5% (450g/lfd.M ±5%)

Rollenbreite
140 cm nutzbare Breite

Scheuerfestigkeit
5 Jahre Garantie / 100,000 Martindale
Scheuertouren (Details auf Anfrage)

Lichtechtheit
5 (ISO 105 - B02)

Reibechtheit
Nass: 4, Trocken: 4 (ISO 105 - X12)

Feuersicherung
BS EN 1021 - 1 (Zigarettest)
BS EN 1021 - 2 (Streichholztest)
BS 7176 Low Hazard

GB

Composition
100% Polyester

Weight
320g/m² ±5% (450g/lin.m ±5%)

Roll width
140 cm minimum

Abrasion Resistance
5 year guarantee / 100,000 Martindale
cycles (full details available)

Light Fastness
5 (ISO 105 - B02)

Fastness to Rubbing
Wet: 4, Dry: 4 (ISO 105 - X12)

Flammability
BS EN 1021 - 1 (cigarette)
BS EN 1021 - 2 (match)
BS 7176 Low Hazard



camira

style with substance

www.camirafabrics.com

Era



Task seating Soft seating Cigarette & Match Year guarantee



Generation
CSE02



Futurist
CSE01



Lifetime
CSE03



Period
CSE07



Cycle
CSE06



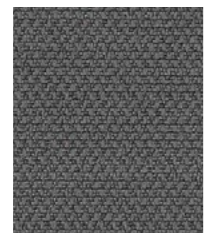
Span
CSE05



Timelapse
CSE16



Phase
CSE17



History
CSE21



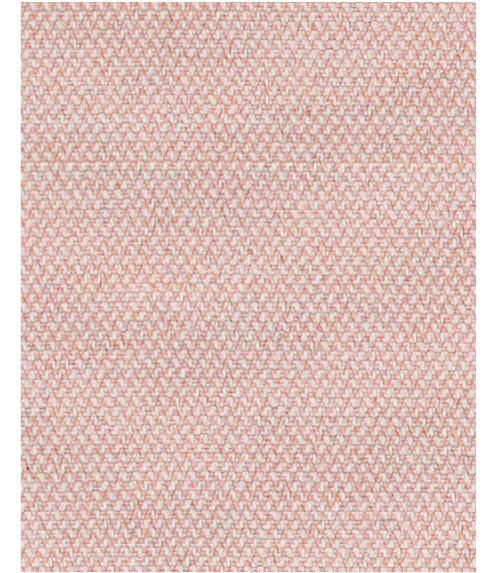
Prime
CSE09



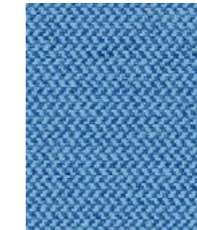
Event
CSE18



Aeon
CSE20



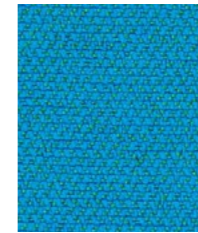
Calendar
CSE19



Chapter
CSE08



Forecast
CSE11



Everlasting
CSE10



Stage
CSE15



Perennial
CSE12



Present
CSE13

Forward
CSE14